

Market Square, Oldham, Greater Manchester

# ROY TOWN

SHOPPING  
CENTRE



North East

Manchester

Oldham



# Location

Royton is a suburb of Oldham located approximately 8 miles north east of Manchester City Centre. Neighbouring towns of Oldham and Shaw are within close proximity.

The main A571 Rochdale Road runs through the centre of the town forming the main street before continuing northwards to Rochdale. The M62 runs to the north and is accessed via the A663 at junctions 21 and 20 via the A627 (M) from Royton.

Market Square, Royton Shopping Centre, Oldham, Greater Manchester.

# OL2 5QD



# Essentials

- Prominent roadside location fronting the A571 Rochdale Road and the B6195 Middleton Road
- Anchored by Co-operative Food Store and Boyes, and located adjacent to Lidl
- Well established shopping centre in Royton town centre
- Weekly popular local market held in Market Square
- Generous free shopper car parking
- National occupiers include Card Factory, Specsavers and Ladbrokes

**+well**

The **co-operative** food

**Specsavers**  
Opticians

**Ladbrokes**

**Card Factory**

**scrivens**  
OPTICIANS | HEARING CARE

**Poundbakery**  
Tasty Baking at Tasty Prices

# Description

Units with ground floor retail sales area, located in a busy parade and part of Market Square, Royton Shopping Centre.

The units participate in a service charge and insurance scheme. Energy performance certificates are available on request.

## PLANNING REFERENCES & LEGAL COST

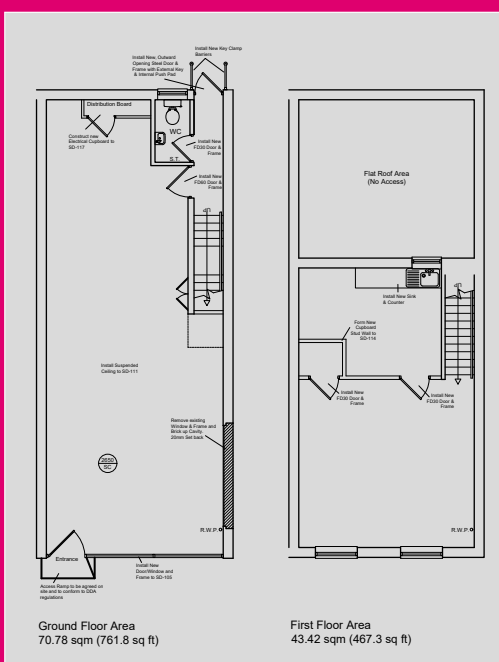
Each party is responsible for their own legal costs in connection with the granting of a lease.

## Available Units

	Sq.ft	Sq.m	Rent ex VAT	Rateable Value	Service Charge	EPC
<b>UNDER OFFER</b>						
GF	716	66.5				

	Sq.ft	Sq.m	Rent ex VAT	Rateable Value	Service Charge	EPC
Unit 42	1,230.1	114.2	£25,000	£14,000	£2,108	E
GF	762.8	70.78				
FF	467.3	43.42				

## Proposed Layout



Possible Uses (subject to planning)	Use class up to 31 August 2020	Use class from 1 Sept 2020
Shop	A1	E
Financial & professional services (not medical)	A2	E
Café or restaurant	A3	E
Takeaway/hot food	A5	Sui generis



MISREPRESENTATION ACT, 1967 London & Cambridge Properties Limited (Company Number 02895002) the registered office of which is at LCP House, Pensnett Estate, Kingswinford, West Midlands DY6 7NA its subsidiaries (as defined in section 1156 of the Companies Act 2006) associated companies and employees ("we") give notice that: Whilst these particulars are believed to be correct no guarantee or warranty is given, or implied therein, nor do they form any part of a contract. [We do our best to ensure all information in this brochure is accurate. If you find any inaccurate information, please let us know and where appropriate, we will correct it.] We make no representation that information is accurate and up to date or complete. We accept no liability for any loss or damage caused by inaccurate information. [This brochure gives a large amount of [statistical] information and there will inevitably be errors in it]. Intending purchasers or tenants should not rely on the particulars in this brochure as statements or representations of fact but should satisfy themselves by inspection or otherwise as to the correctness of each of them. We provide this brochure free of charge and on the basis of no liability for the information given. In no event shall we be liable to you for any direct or indirect or consequential loss, loss of profit, revenue or goodwill arising from your use of the information contained herein. All terms implied by law are excluded to the fullest extent permitted by law. No person in our employment has any authority to make or give any representation or warranty whatsoever in relation to the property. SUBJECT TO CONTRACT. We recommend that legal advice is taken on all documentation before entering into a contract. You should be aware that the Code of Practice on Commercial Leases in England and Wales strongly recommends you seek professional advice from a qualified surveyor, solicitor or licensed conveyancer before agreeing or signing a business tenancy agreement. The Code is available through professional institutions and trade associations or through the website <https://www.ncs.org.uk/upholding-professional-standards/sector-standards/real-estate/code-for-leasing-business-premises-1st-edition/>. LCP's privacy notices that apply to its use of your personal information are at [www.lcpgroup.co.uk/policies](http://www.lcpgroup.co.uk/policies). The privacy notice that applies to you will depend on the nature of your relationship with LCP, and in some cases more than one may apply to you. LCP's privacy policy giving a high level overview of how LCP approaches data protection and your personal information can be found at [www.lcpproperties.co.uk/uploads/files/LCP-Privacy-Web-and-Data-Policy-May-2018.pdf](http://www.lcpproperties.co.uk/uploads/files/LCP-Privacy-Web-and-Data-Policy-May-2018.pdf).

10-02-25 FEB25

## VIEWING & ENQUIRIES

**NEWNS WEBSTER**  
RETAIL AND LEISURE  
PROPERTY CONSULTANTS  
0113 433 0117  
[www.newnswebster.com](http://www.newnswebster.com)

**Matthew Webster**  
mw@newnswebster.com  
Mobile - 07565 876686

**Richard Webster**  
rw@newnswebster.com  
Mobile - 07739 680 472

Owned and Managed by:

**LCP**  
part of MCore  
01384  
400123  
[searchlcp.co.uk](http://searchlcp.co.uk)

**Rakesh Joshi**  
RJoshi@lcpproperties.co.uk  
Mobile - 07741 385 322